



# LOW IMPACT

PRODUCED BY ECOFIBRE ADVANCED TECHNOLOGIES

---

THE

HEATL  CK<sup>®</sup>

COLLECTION

ADVANCED SOLUTIONS FOR PREMIUM BRANDS

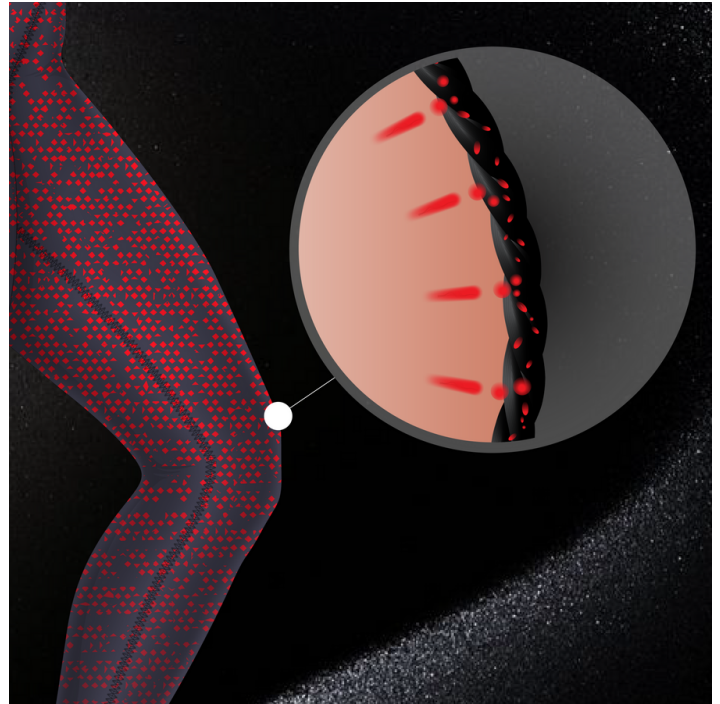
[www.lowimpact.technology](http://www.lowimpact.technology)

# HEATLOCK®

## Hold Your Heat

HeatLock® is all about maximizing heat transfer while preventing heat loss, thanks to the ingenious use of low thermal conductivity principles.

The HeatLock® collection boasts three exceptional variations: HeatLock®, HeatLock Wave®, and HeatLock Hollow®. Each variation represents a new dimension in warmth and insulation, delivering unparalleled comfort and efficiency.



## Key Benefits

**INCREASED HEAT RETENTION**

**IMPROVED CLO VALUE**

**LIGHTER & WARMER**

**IMPROVED DRY TIME**

# HEATLOCK<sup>®</sup>

## Varations

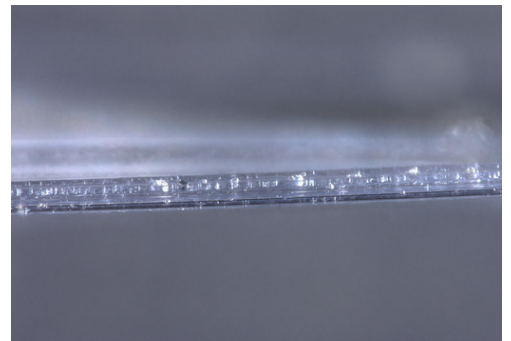
### HEATLOCK<sup>®</sup>

HeatLock is engineered to maximize heat transfer and minimize heat loss.

By incorporating nature's warmest heat-absorbing minerals into the sheath of the fiber, HeatLock helps to create an insulation barrier engineered to retain your body heat.

### HEATLOCK<sup>®</sup> WAVE

HeatLock Wave takes heat transfer to the next level. This variation combines the power of heat absorbing minerals with a unique fiber structure. By trapping heat into cavernous fibers, HeatLock Wave enhances heat retention offering unparalleled warmth and insulation.



HeatLock Hollow is a groundbreaking innovation in heat isolation. Leveraging the heat absorbing minerals with a hollow core technology, HeatLock Hollow acts as a double barrier against heat transfer.

The hollow fibers block heat conduction, while the air inside inhibits heat convection. This dynamic duo ensures that warmth is trapped and retained, providing unmatched insulation and energy efficiency.

